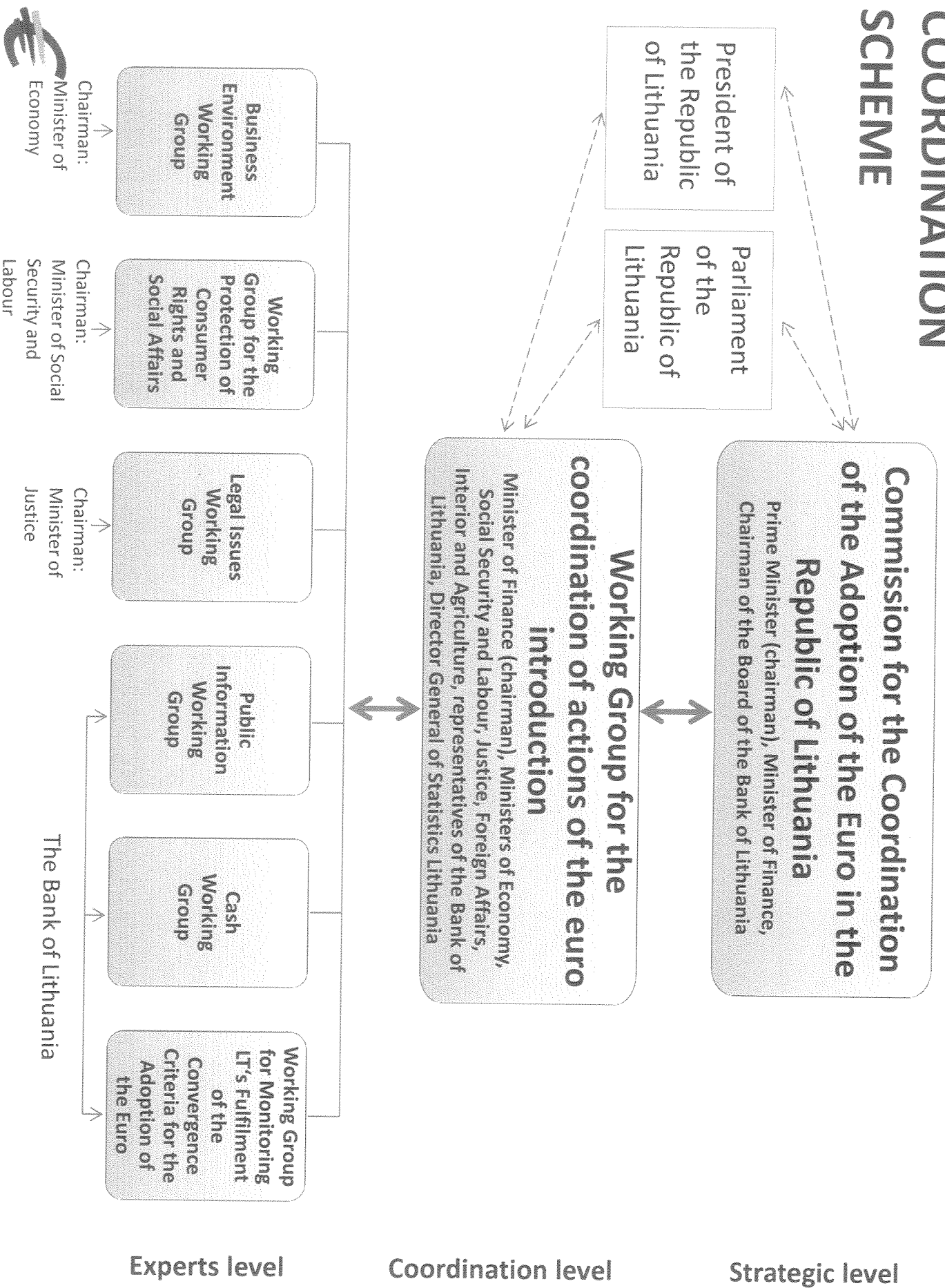


COORDINATION SCHEME



Commission for the Coordination of the Adoption of the Euro in the Republic of Lithuania
 Prime Minister (chairman), Minister of Finance,
 Chairman of the Board of the Bank of Lithuania

Working Group for the coordination of actions of the euro introduction
 Minister of Finance (chairman), Ministers of Economy,
 Social Security and Labour, Justice, Foreign Affairs,
 Interior and Agriculture, representatives of the Bank of Lithuania,
 Director General of Statistics Lithuania

Business Environment Working Group
 Chairman: Minister of Economy

Working Group for the Protection of Consumer Rights and Social Affairs
 Chairman: Minister of Social Security and Labour

Legal Issues Working Group
 Chairman: Minister of Justice

Public Information Working Group

Cash Working Group

Working Group for Monitoring LT's Fulfilment of the Convergence Criteria for the Adoption of the Euro



Chairman: Minister of Social Security and Labour

The Bank of Lithuania

Experts level

Coordination level

Strategic level

