

THE PARTICIPATION OF PERSONS WITH DISABILITIES IN THE ELECTORAL PROCESS

MONDAY, 4 DECEMBER 2023
16:00 - 18:30

MEETING ROOM
ANTALL 6Q2

EUROPEAN PARLIAMENT
BRUSSELS



Copyright: Agnieszka Eva Juszczyk/European Disability Forum

LIST OF PARTICIPANTS

Chaired by:

Dragoş Pîslaru,
Chair of the Committee on Employment and Social Affairs

Interparliamentary
Committee Meeting

EUROPEAN PARLIAMENT - NATIONAL PARLIAMENTS

LIST OF PARTICIPANTS - NATIONAL PARLIAMENT

BELGIQUE/BELGIË/ BELGIUM

Chambre des représentants / Kamer van volksvertegenwoordigers / House of Representatives

Member:



Mr Louis MARIAGE

Member, Committee on Social Affairs, Employment and Pensions

Ecolo/Groen - GREENS/EFA

Officials:

Mr Nicodème HAYOIS

Official of National Parliament

Ms Katrien JOOS

National Parliament representative (based in Brussels)

Sénat / Senaat / Senate

Member:



Mr Kris POELAERT

Member, Committee on Democratic Renewal, Citizenship and International Affairs

CD&V - EPP

Official:

Mr Jan GRILLET

Official of National Parliament

ČESKÁ REPUBLIKA / CZECH REPUBLIC

Senát / Senate

Member:



Ms Miluše HORSKÁ

Chair, Committee on Social Policy

KDU-ČSL- EPP

Official:

Ms Jana ZATLOUKALOVÁ

Official of National Parliament

EIRE / IRELAND

Dáil Éireann / House of Representatives

Members:



Ms Kathleen FUNCHION

Chair, Committee on Children, Equality, Disability, Integration and Youth

Sinn Féin.- GUE/NGL



Mr Michael MOYNIHAN

Chair, Joint Committee on Disability Matters

Fianna Fail- RENEW

Officials:

Ms Mairead ODOVONAN

Official of National Parliament

Mr Paul CONWAY

National Parliament representative (based in Brussels)

Seanad / Senate

Member:



Ms Erin MCGREEHAN

Member, Joint Committee on Disability Matters

Fianna Fail-RENEW

ΕΛΛΑΔΑ / GREECE

Βουλή των Ελλήνων / Hellenic Parliament

Member:



Ms Maria ANTONIOU

Chair, Subcommittee for people with disabilities

Nea Demokratia - EPP

Officials:

Mr Ioannis NYCHAS

Official of National Parliament

Ms Efstathia ANGELOPOULOU

National Parliament representative (based in Brussels)

ESPAÑA / SPAIN

Senado / Senate

Member:



Mr Juan Carlos SERRANO

Member, (Committees of the Senate have not yet been constituted)

Partido Popular - EPP

Official:

Ms Carmen SÁNCHEZ-ABARCA

National Parliament representative (based in Brussels)

FRANCE

Sénat / Senate

Member:



Mr Bernar JOMIER

Member, Committee on European Affairs

Groupe Socialiste, Écologiste et Républicain - S&D

Officials:

Ms Delphine BERT

Official of National Parliament

Ms Lea KHOURY

Official of National Parliament

Member:



Mr Massimiliano PANIZZUT

Member, Committee on Social Affairs

Lega - Salvini Premier - ID

Official:

Mr Stefano CICCIGNANI

National Parliament representative (based in Brussels)

Members:



Mr Antonio GUIDI

Member, Committee on Social Affairs,
Health, Public and Private Employment, Social Security

Gruppo Civici d'Italia - EPP



Ms Daniela TERNULLO

Member, Committee on Constitutional Affairs, Prime Ministerial and Home Affairs, General
Organisation of the State and the Civil Service, Publishing Industry, Digitization

Forza Italia - EPP

Official:

Ms Beatrice GIANANI

National Parliament representative (based in Brussels)

ΚΥΠΡΟΣ / CYPRUS

Βουλή των Αντιπροσώπων / House of Representatives

Member:



Mr Aristos DAMIANOU

Chair, Committee on Internal Affairs

AKEL - Left - New Forces - GUE/NGL

Officials:

Mr Alexis ANTONIADES

Official of National Parliament

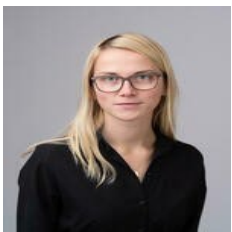
Ms Maria SOTIRIOU GEORGIOU

National Parliament representative (based in Brussels)

LATVIJA / LATVIA

Saeima / Parliament of the Republic of Latvia

Member:



Ms Zane SKUJINA - RUBENE

Member, Committee on European Affairs and Social and Employment Matters

New Unity - EPP

Officials:

Ms Edite KRIVSA

Official of National Parliament

Mr Girts OSTROVSKIS

National Parliament representative (based in Brussels)

LIETUVA / LITHUANIA

Seimas/ Parliament of the Republic of Lithuania

Members:



Mr Vytautas BAKAS

Member, Committee on Human Rights

Democrats for Lithuania - Greens-EFA



Ms Guoda BUROKIENĖ

Member, Committee on State Administration and Local Authorities

Lithuanian Farmers and Greens Union - NI



Ms Monika OŠMIANSKIENĖ

Member, Committee on European Affairs and Committee on Social Affairs and Labour

Freedom Party - NI

Officials:

Ms Simona JANKAUSKAITE

Official of National Parliament

Ms RUTA BUNEMČIŪTĖ

National Parliament representative (based in Brussels)

Members:



Mr Gergely TAPOLCZAI

Member, Committee on Social Welfare

Fidesz - NI



Mr Ferenc VARGA

Member, Committee on Social Welfare

Independent - NI

Officials:

Ms Karina BRANDENBURG

Official of National Parliament

Mr Csaba HUSZÁR

National parliament representatives (based in Brussels)

Ms Tímea KRISTÓFFY

National parliament representatives (based in Brussels)

PORTUGAL

Assembleia da República / Assembly of the Republic

Members:



Ms Maria Emília CERQUEIRA

Member, Committee on Constitutional Affairs, Rights, Freedoms and Guarantees

PSD - EPP



Ms Marta Luísa DE FREITAS

Member, Committee on Employment, Social Security and Inclusion

PS - S&D



Mr Firmino MARQUES

Member, Committee on European Affairs

PSD - EPP

Official:

Ms Catarina RIBEIRO LOPES

National Parliament representative (based in Brussels)

ROMÂNIA / ROMANIA

Senat / Senate

Members:



Ms Laura GEORGESCU

Member, Committee on Labour, Family and Social Protection

Socialists and Democrats - S&D



Ms Liliana SBÎRNEA

Member, Committee on Labour, Family and Social Protection

Socialists and Democrats - S&D

Officials:

Ms Oana-Alina NEDELCU

Official of National Parliament

Ms Izabella MOLDOVAN

National Parliament representative (based in Brussels)

SLOVENIJA / SLOVENIA

Državni Zbor / National Assembly

Members:



Ms Tereza NOVAK

Member, Committee on Labour, Family, Social Affairs and Disability

Svoboda - RENEW



Ms Andreja ŽIVC

Member, Committee on Labour, Family, Social Affairs and Disability

Svoboda - RENEW

Official:

Mr Luka KAVCIC

National Parliament representative (based in Brussels)

SLOVENSKO / SLOVAKIA

Národná Rada / National Parliament

Member:



Ms Veronika VESLÁROVÁ

Member, Committee on social affairs

Progresívne Slovensko - NI

Official:

Ms Dominika SABOVA

National Parliament representative (based in Brussels)

SVERIGE / SWEDEN

Riksdagen / Swedish Parliament

Members:



MS Angelika BENGTTSSON

Member, Committee on Health and Welfare

The Sweden Democrats - ECR



Ms Malin HÖGLUND

Member, Committee on Health and Welfare

The Moderate Party - EPP



Ms Victoria TIBLÖM

Member, Committee on the Constitution

The Sweden Democrats - ECR



Ms Ulrika WESTERLUND

Member, Committee on Health and Welfare

The Green Party - GREENS/EFA

LIST OF LIST OF PARTICIPANTS - OFFICIALS

FRANCE

Assemblée nationale / National Assembly

Ms Philomène BOCCANFUSO

Official of National Parliament

HRVATSKA / CROATIA

Hrvatski Sabor / Croatian Parliament

Ms Tanja BABIC

National Parliament representative (based in Brussels)

MALTA

Kamra tad-Deputati / House of Representatives

Mr Andre VELLA

National Parliament representative (based in Brussels)

NEDERLAND / THE NETHERLANDS

Tweede Kamer / House of Representatives

Ms Yasmin MALAI

National Parliament representative (based in Brussels)

POLSKA / POLAND

Sejm / Sejm

Ms KAROLINA MAKARA

National Parliament representative (based in Brussels)

Senat / Senate

Ms Natalia REANUDINEAU

National Parliament representative (based in Brussels)